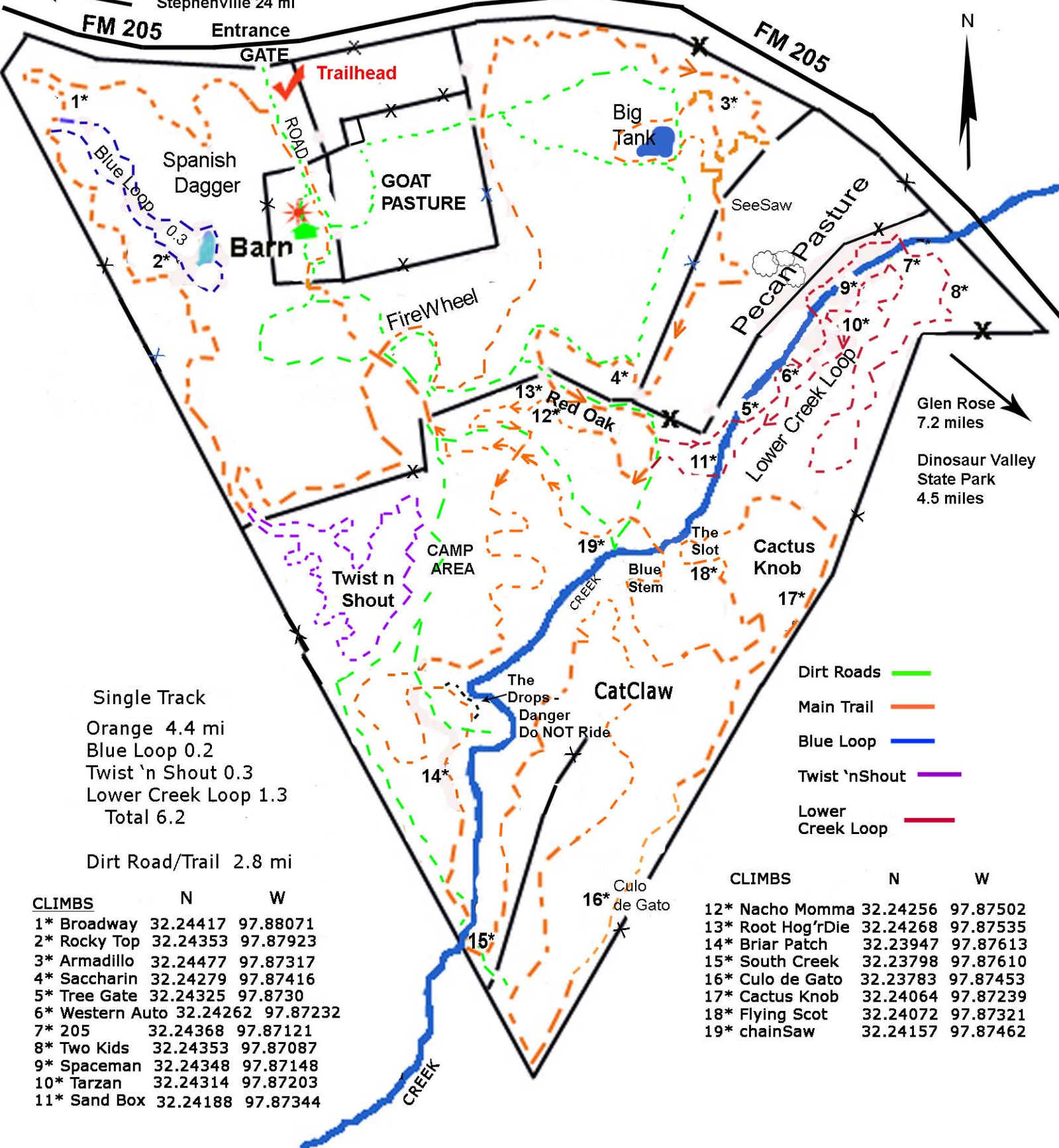


GATE Lat N32.24458 Long W97.87926

# SOLAVACA TRAIL MAP



Granbury 17 mi  
Stephenville 24 mi

N

Glen Rose  
7.2 miles  
Dinosaur Valley  
State Park  
4.5 miles

Single Track  
Orange 4.4 mi  
Blue Loop 0.2  
Twist 'n Shout 0.3  
Lower Creek Loop 1.3  
Total 6.2

Dirt Road/Trail 2.8 mi

Dirt Roads —  
Main Trail —  
Blue Loop —  
Twist 'nShout —  
Lower  
Creek Loop —

CLIMBS	N	W
1* Broadway	32.24417	97.88071
2* Rocky Top	32.24353	97.87923
3* Armadillo	32.24477	97.87317
4* Saccharin	32.24279	97.87416
5* Tree Gate	32.24325	97.8730
6* Western Auto	32.24262	97.87232
7* 205	32.24368	97.87121
8* Two Kids	32.24353	97.87087
9* Spaceman	32.24348	97.87148
10* Tarzan	32.24314	97.87203
11* Sand Box	32.24188	97.87344

CLIMBS	N	W
12* Nacho Momma	32.24256	97.87502
13* Root Hog'rDie	32.24268	97.87535
14* Briar Patch	32.23947	97.87613
15* South Creek	32.23798	97.87610
16* Culo de Gato	32.23783	97.87453
17* Cactus Knob	32.24064	97.87239
18* Flying Scot	32.24072	97.87321
19* chainSaw	32.24157	97.87462